

WHAT SHE WANTS...

MICHELLE OGUNDEHIN
Editor in chief, Elle Decoration



THE MINITREND
 I feel sure that **rattan** is going to make a comeback. Go for Fifties shapes, vintage preferably, and use it indoors and out. Get sourcing now and be ahead of the hipsters.



THE BRAND
 One of Scandinavia's finest fashion houses, **Day Birger et Mikkelsen** also makes fabulous homewares, from candlesticks to cushions and candles, all referencing the laid-back bohemian vibe of its clothes.



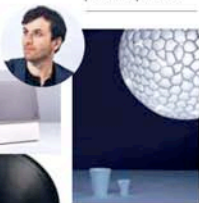
THE LIGHT
 I love objects that multitask, so Ligne Roset's **Arnaud**, with its tray for trinkets, plant stand and whizzy red flex, is a triple-duty winner.



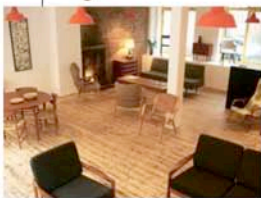
THE LOOK
 It has to be the retro elegance of Marc Jacobs' **Louis Vuitton autumn 2012** collection. The hats! The shoes! The gloves! The details and layering make it my kind of haughty glamour.



THE DESIGNER
 With a background in fine art and a career as a stylist behind her, **Faye Toogood**'s first poetic furniture collection is sculpture as practical product.



THE BOUTIQUE
 A treasure trove of all things Scandi, **Forest London** is from Eva Coppens, who gave us Clerkenwell pop-up shop Lulu Bright. Look for pared-back Nordic chic from the likes of Arne Jacobsen, Arne Vodder and Peter Hvidt.



THE EVENT
 At the flight-themed **Tatton Park Biennial** exhibits will include a romantic bridge held up by helium-filled balloons.



WHAT HE WANTS...

TONY CHAMBERS
Editor in chief, Wallpaper magazine*



THE DESIGNER
 Québec-born designer **Philippe Malouin** worked for Tom Dixon and is now represented by Gallery Fumi in London. He will unveil new work at Design Miami in Basle this June.



THE PLACE
 Pablo Flack and David Waddington of Bistrottheque open their latest bistro, **Shrimpy's**. In June. Housed in an old King's Cross gas station, it will serve Latin food by way of California.

THE ECO QUEEN
 Born to a Danish-German family, Paris-based **Gesa Hansen** uses ecologically grown wood to create handmade Scandi designs.



THE CULTURE
 The unmissable Cité de la Mode et du Design in Paris gets an eclectic new arts venue, **Wanderlust**, run by Savoir Faire.



THE ART
 Platform at Habitat is a new gallery space housed in the Kings Road store, London. Its first show is the work of architect **John Pawson** in Habitat's own white birch frames.



THE CUPPA
 Fusing modern talent with tradition **British Bone** at the ICF in New York brings British ceramic design to a broader public. It includes work by curator Suzanne Trocmé.

THE HERITAGE
 German design firm E15 reissues work by architect **Ferdinand Kramer**, with a daybed, chair and stool from the Twenties and pieces from the Forties and Fifties.



THE DUO
 Fresh-faced entrepreneurs Louise Breguet and Jean-Baptiste Souletie have brought together 11 international designers to form **La Chance**. Their carpets, furniture (right) and lighting all have a joyful, modern vibe.



JASON LLOYD/EVANS; © REST SHOP; A VISUAL INVENTORY BY JOHN PAWSON; £20.95; © PHADON; 2012; PHADON.COM; E15.COM; DAY BIRGER ET MIKKELSEN; AMARA.CO.UK; EDITION L'ACHANGE FR; FAYE TOOGOOD.COM; FORESTLONDON.COM; GESAHANSEN.COM; HABITAT.CO.UK; ICF.COM; PAUL COCKSEGE.CO.UK; PHILIPPEMALOUM.COM; SHOP.LIGNE-ROSET.CO.UK; SHRIMPYS.CO.UK; TATTONPARKBIENNIAL.ORG; WANIERLISTPARIS.COM